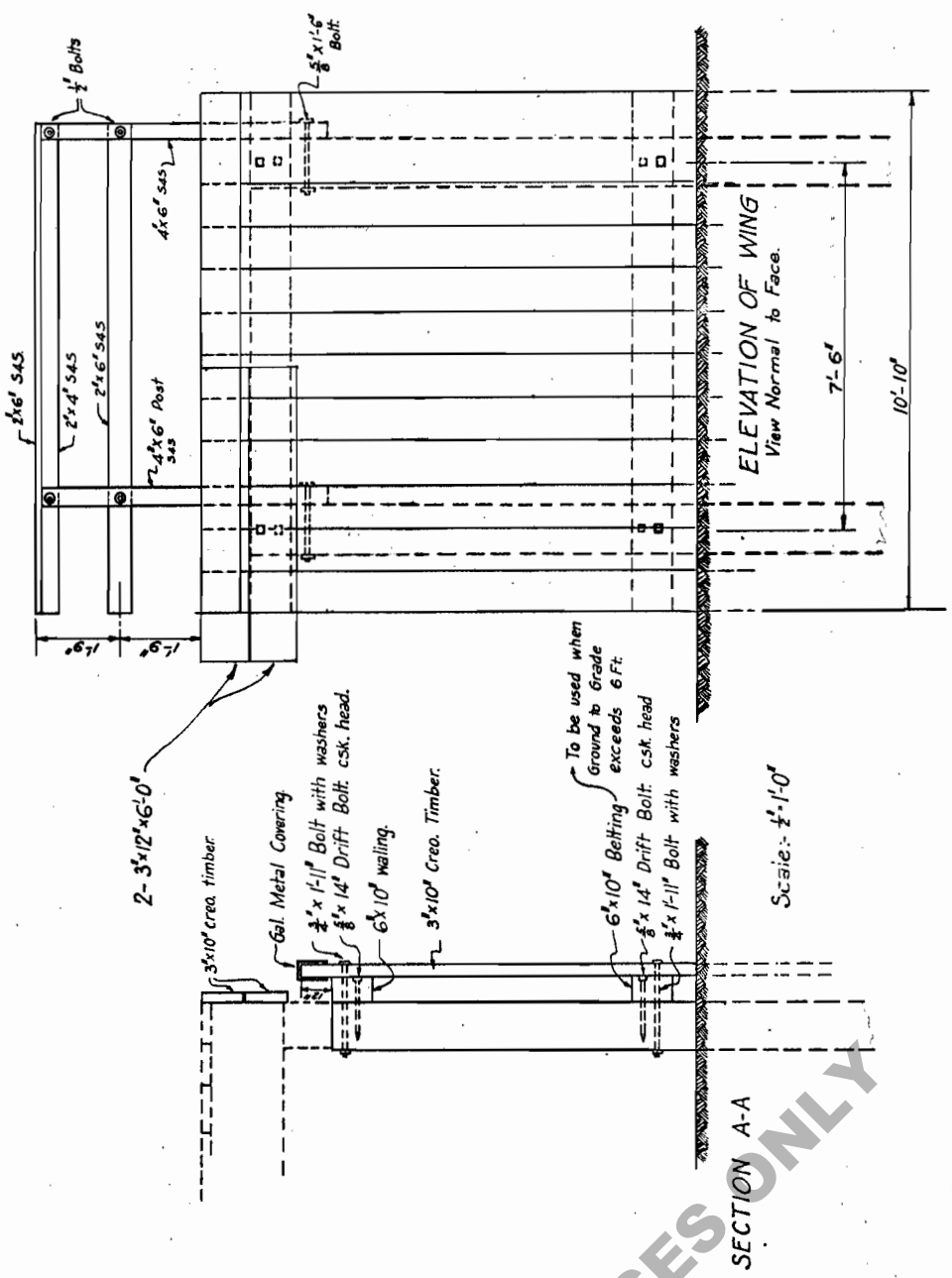
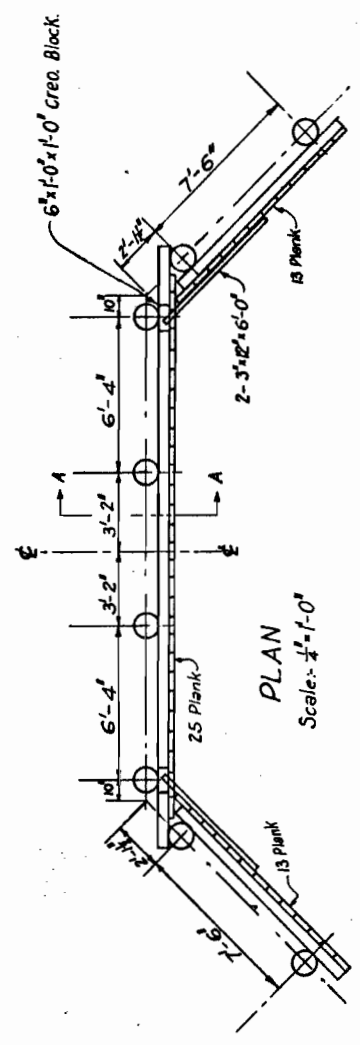


ONE BULKHEAD

Bulkhead	Ground to Top of Pile Ft.	Creo. Lbr. Ft. B. M.	Spikes Lbs.	Size of Sheathing
P	3	5002		2x12x14'
R	4	5002		2x12x14'
S	5	5538		2x12x16'
T	6	6074		2x12x16'
	7	6074		2x12x18'
	8	6074		2x12x18'
	9	6610		2x12x20'
	10	6610		2x12x20'



ONE BULKHEAD (Inc. 2 Wings.)

Bulkhead	Ground to Grade Ft.	Creo. Lbr. Ft. B. M.	Spikes Lbs.	Size of Sheathing Bulkhead	Wing
A	4	2065		3x10x12'	3x10x14'
B	5	2320		3x10x14'	3x10x16'
C	6	2320		3x10x14'	3x10x16'
D	7	2799		3x10x16'	3x10x18'
	8	2799		3x10x16'	3x10x18'
	9	3054		3x10x18'	3x10x20'
	10	3054		3x10x18'	3x10x20'
				Untreated Lbr. = 102 Ft. B. M.	

STANDARD PLAN
 VERTICAL PLANK BULKHEADS
 LOUISIANA HIGHWAY COMMISSION
 Baton Rouge, La. Aug. 1929
 Scale as shown

FOR INFORMATIONAL PURPOSES ONLY